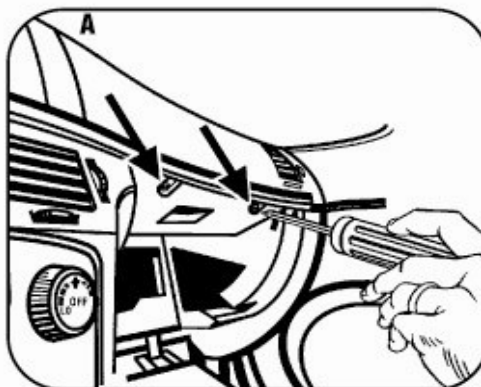


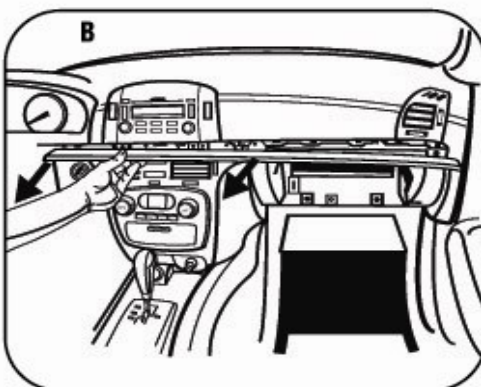
## HYUNDAI SONATA 2006-2008

1 Disconnect the negative battery terminal to prevent an accidental short circuit.

2 Open glove box and remove (2) Phillips screws from top edge of glove box opening and bottom edge of wood trim below radio. (Figure A)



3 Unclip and remove wood trim from below radio and above glove box. (Figure B)



4 Remove (1) Phillips screw securing each side panel next to radio then unclip and remove the panels. (Figure C)

5 Remove (6) Phillips screws securing the radio. Unplug and remove the radio. (Figure D)

**NOTE:** There is a factory support bracket in the bottom of the radio cavity that may need to be pushed out of the way for the aftermarket radio to fit properly.

Continue to kit assembly.

